

# L&L FABRICATION

## VESSELS



“U” Stamp Coded Vessel  
Fabrication and Welding



“R” Stamp Coded Vessel  
Repairs and Alterations



Engineering & Design Services



Customized Hauling Services



Custom Fabrication and  
Processing



CNC Plasma Cutting



Structural and Plate Steel  
Inventory



Production Equipment Rebuilds  
and Sales



Valve Rebuilds & Repair



Custom Gaskets



Sandblasting and Coating

[info@LNLFAB.com](mailto:info@LNLFAB.com)

306 Hwy 59 | Douglas, WY 82633

418 N 9th Avenue | Greeley, CO 80631

307.358.5834 | [www.lnlfab.com](http://www.lnlfab.com)



# L&L FABRICATION

## WHAT MAKES US BETTER

L&L is a premier fabrication and oilfield service facility in the Rocky Mountain region. We pride ourselves in delivering customer specific solutions since 1994. Our goal is to deliver what you want, when you want it, safely and efficiently.

Let us help you build tomorrow.

## EQUIPMENT AND CAPABILITIES

### Facility Size and Capability

- 57,000+ Square Feet in Facilities
- 27+ Acres of Yard Space
- 2 10-ton Overhead Bridge Cranes

### Plasma Table: Messer Metalmaster Evolution HyDefinition 5 axis CNC plasma table

- Cutting Area: Width 10'-0" x Length 20'-0" sheets/plates
- Min thickness: Gauge material Carbon Steel, Stainless and Aluminum
- Max thickness: Carbon Steel Plate 2", Stainless and Aluminum 1-1/2"
- Controller: Hypertherm XPR300 X-Definition Plasma System True Hole technology
- Beveling: +/- 52 degrees torch tilt and Bevel Angle Change on the Fly capabilities

### Plate Roll: Davi Plate Roll Model CO3750

- Rolling Capacity:
- Carbon Steel Max 1-1/4" thick x 144" wide
- Stainless 3/4" thick x 144" wide
- \*Heavier plate can be rolled in narrower sections

### Saw: S-FAB CDM 21-32 Miter Saw

- Up to 60° miter capability
- Max Capacity at 0° Round 22.0" Dia | Flat 21.3"H x 32.3"W | Square 21.3" Dia
- Max Capacity at 30° Round 22.0" Dia | Flat 21.3"H x 27.8"W | Square 21.3" Dia
- Max Capacity at 45° Round 21.7" Dia | Flat 21.3"H x 21.7"W | Square 21.3" Dia

### Iron Worker: Scotchman 5014-ET

- Rated on: 65,000 PSI Tensile A36 Mild Steel
- Punching Capacity 50 ton: 1-1/4" in 1/2" | 13/16" in 3/4" | Throat Depth: 4"
- Angle Shear: 90° 4" x 4" x 3/8" | 45° 2" x 2" x 3/8"
- Pipe Notcher Sch 40: 3/4" | 1" | 1-1/4" | 1-1/2" | 2"
- Rectangle Notcher: 2-1/2" x 3" x 5/16" | 2-1/2" x 2-3/4" x 3/8"
- 90° V. Notcher: 6" x 6" x 1/8" | 3" x 3" x 1/4"

### Sub-Arc Welder: ESAB

### 3 Press Brakes

- Various Sizes



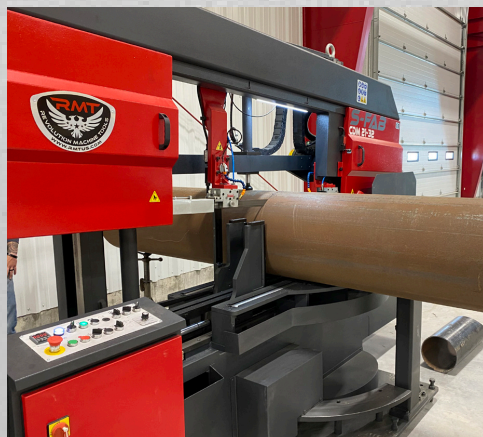
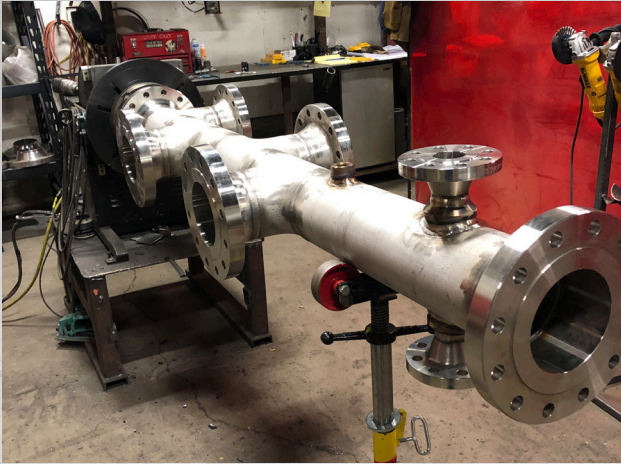
307.358.5834 | [www.lnlfab.com](http://www.lnlfab.com)





# L&L FABRICATION

## CUSTOM FABRICATION & METAL FORMING



General & Structural Steel Fabrication



Engineering & Design Services



Customized Hauling Services



CNC Plasma Cutting



Metal Forming



Structural and Plate Steel Inventory



Sandblasting and Coating

[info@LNLFAB.com](mailto:info@LNLFAB.com)

306 Hwy 59 | Douglas, WY 82633

418 N 9th Avenue | Greeley, CO 80631

307.358.5834 | [www.lnlfab.com](http://www.lnlfab.com)



# L&L FABRICATION

## WHAT MAKES US BETTER

L&L is a premier fabrication and oilfield service facility in the Rocky Mountain region. We pride ourselves in delivering customer specific solutions since 1994. Our goal is to deliver what you want, when you want it, safely and efficiently.

Let us help you build tomorrow.

## EQUIPMENT AND CAPABILITIES

### Facility Size and Capability

- 57,000+ Square Feet in Facilities
- 27+ Acres of Yard Space
- 2 10-ton Overhead Bridge Cranes

### Plasma Table: Messer Metalmaster Evolution HyDefinition 5 axis CNC plasma table

- Cutting Area: Width 10'-0" x Length 20'-0" sheets/plates
- Min thickness: Gauge material Carbon Steel, Stainless and Aluminum
- Max thickness: Carbon Steel Plate 2", Stainless and Aluminum 1-1/2"
- Controller: Hypertherm XPR300 X-Definition Plasma System True Hole technology
- Beveling: +/- 52 degrees torch tilt and Bevel Angle Change on the Fly capabilities

### Plate Roll: Davi Plate Roll Model CO3750

- Rolling Capacity:
- Carbon Steel Max 1-1/4" thick x 144" wide
- Stainless 3/4" thick x 144" wide
- \*Heavier plate can be rolled in narrower sections

### Saw: S-FAB CDM 21-32 Miter Saw

- Up to 60° miter capability
- Max Capacity at 0° Round 22.0" Dia | Flat 21.3"H x 32.3"W | Square 21.3" Dia
- Max Capacity at 30° Round 22.0" Dia | Flat 21.3"H x 27.8"W | Square 21.3" Dia
- Max Capacity at 45° Round 21.7" Dia | Flat 21.3"H x 21.7"W | Square 21.3" Dia

### Iron Worker: Scotchman 5014-ET

- Rated on: 65,000 PSI Tensile A36 Mild Steel
- Punching Capacity 50 ton: 1-1/4" in 1/2" | 13/16" in 3/4" | Throat Depth: 4"
- Angle Shear: 90° 4" x 4" x 3/8" | 45° 2" x 2" x 3/8"
- Pipe Notcher Sch 40: 3/4" | 1" | 1-1/4" | 1-1/2" | 2"
- Rectangle Notcher: 2-1/2" x 3" x 5/16" | 2-1/2" x 2-3/4" x 3/8"
- 90° V. Notcher: 6" x 6" x 1/8" | 3" x 3" x 1/4"

### Sub-Arc Welder: ESAB

### 3 Press Brakes

- Various Sizes

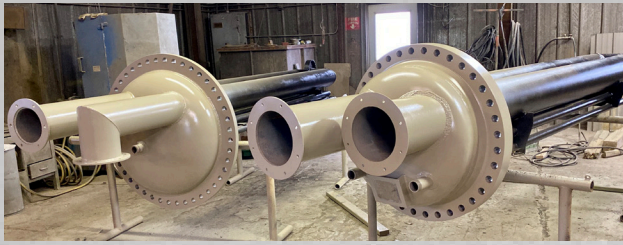


307.358.5834 | [www.lnlfab.com](http://www.lnlfab.com)





# L&L FABRICATION



## FIELD TECH SERVICES



Engineering & Design Services



Field Service Crews  
BMS Installation  
& Maintenance



Pipeline Repair and  
Maintenance Crews



Combustion Maintenance



Valve Repair & Maintenance



Equipment Cleaning



Hydrovac Services



Structural and Plate Steel  
Inventory



Emergency Services



Sandblasting and Coating



Large Variety of Parts and  
Service Equipment Available

[info@LNLFAB.com](mailto:info@LNLFAB.com)

306 Hwy 59 | Douglas, WY 82633  
418 N 9th Avenue | Greeley, CO 80631  
307.358.5834 | [www.lnlfab.com](http://www.lnlfab.com)